

DYT/DYU

SWIVEL



- ✓ quadruple bearing system
- ✓ complete stainless steel
- ✓ live swivel
- ✓ longevity
- ✓ high quality

Application

- ✓ high RPM
- ✓ high pressures
- ✓ thrust and radial force
- ✓ self rotating applications
e.g.: surface cleaners, part cleaners

Pressure

DYT: 5000 psi

DYU: 7300 psi

Temperature RPM

250°F

max. 2'000 rpm

Body Inner part Seal

stainless steel

stainless steel

carbide

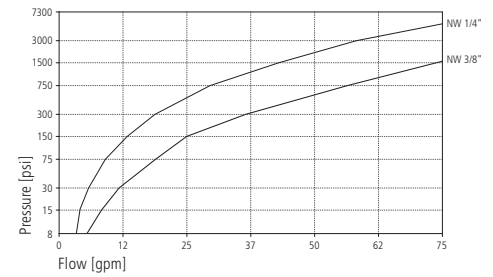
Bearing

2x radial ball bearings

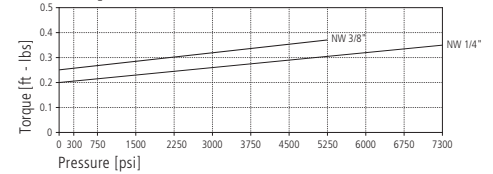
2x thrust ball bearings

Throughput medium water, oil etc.
pH 3 - 12
filtered 10 microns

Flow

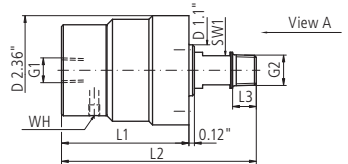


Torque



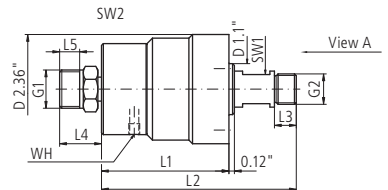
DYT

Part No.	G1 (F)	G2 (M)	NW	SW1	SW2	L1	L2	L3	L4	L5	Weight
59.051	1/4" NPTF	1/4" NPTM	1/4"	0.63	-	2.76	4.21	0.39	-	-	51.7 oz
59.053	1/4" NPTF	3/8" NPTM	1/4"	0.63	-	2.76	4.21	0.43	-	-	51.7 oz
59.063	1/4" NPTF	G3/8" M	1/4"	0.63	-	2.76	4.21	0.47	-	-	50.1 oz
59.151	3/8" NPTF	1/4" NPTM	1/4"	0.63	-	2.83	4.29	0.39	-	-	53.7 oz
59.153	3/8" NPTF	3/8" NPTM	1/4"	0.63	-	2.83	4.29	0.43	-	-	53.7 oz
59.163	3/8" NPTF	G3/8" M	1/4"	0.63	-	2.83	4.29	0.47	-	-	49.9 oz
59.653	3/8" NPTF	3/8" NPTM	3/8"	0.63	-	2.83	4.29	0.43	-	-	53.7 oz



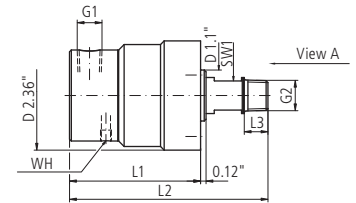
DYT

Part No.	G1 (QV)	G2 (M)	NW	SW1	SW2	L1	L2	L3	L4	L5	Weight
59.203	M21x1.5 M	G3/8" M	1/4"	0.63	0.87	2.76	4.21	0.47	0.87	0.45	54.7 oz
59.253	M22x1.5 M	G3/8" M	1/4"	0.63	0.87	2.76	4.21	0.47	0.87	0.45	54.7 oz



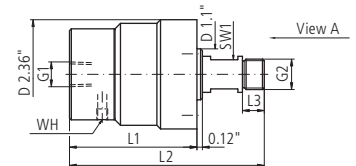
DYT 90°

Part No.	G1 (F)	G2 (M)	NW	SW1	SW2	L1	L2	L3	L4	L5	Weight
59.453	3/8" NPTF	3/8" NPTM	1/4"	0.63	-	2.83	4.29	0.43	-	-	53.7 oz
59.463	3/8" NPTF	G3/8" M	1/4"	0.63	-	2.83	4.29	0.47	-	-	50.6 oz
59.902	3/4" NPTF	G3/8" M	3/8"	0.63	-	3.62	5.08	0.47	-	-	61.7 oz

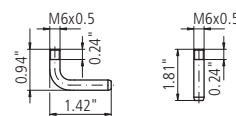


DYU (7300 psi)

Part No.	G1 (F)	G2 (M)	NW	SW1	SW2	L1	L2	L3	L4	L5	Weight
59.168	3/8" NPTF	G3/8" M	1/4"	0.63	-	2.83	4.29	0.43	-	-	50.7 oz

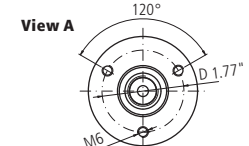


WH (weep hole pipes)



Part No. 902.745

Part No. 902.765



36.905	Seal kit 1/4"
36.906	Seal kit 1/4" + adhesive
36.908	Seal kit 3/8"
36.909	Seal kit 1/4" (7300 psi)

Legend

M.. = metric thread, **.M** = male, **F** = female, **G** = gas pipe thread, **QV** = quick connects, **SV** = profile ring fitting
D = diameter, **k** = conical, **L** = length, **NW** = nominal width, **SW** = wrench size